

**Series X01  
Rotary Vane Pumps**



## Series X01 rotary vane pumps

### Introduction

The rotary vane pumps are positive displacement volumetric pumps, designed for pumping water and aggressive liquids with low flow at high pressure.

### Technical features and manufacturing characteristics

The rotary vane pump with brass or stainless steel body utilizes a stainless steel AISI 304 rotor, while the pumping chamber and the vanes are in graphitic carbon.

The inlet and outlet ports are 3/8 NPT (or 1/2 NPT for 501 and bigger) female threaded and the pump is equipped with a built-in adjustable by-pass valve.

X01 series pump units are directly mechanically coupled to the drive motor. The motor is explosion proof according CENELEC.

### All models, upon request, are available with

- brass body
  - special clearances for temperature higher than 70°C (max 90°C)
  - Viton seals for special fluids
  - NSF listed pumps for potable water
  - power supplies
    - 400VAC/50Hz-3 phase
    - 425VAC/60Hz-3 phase
- different power supply upon request

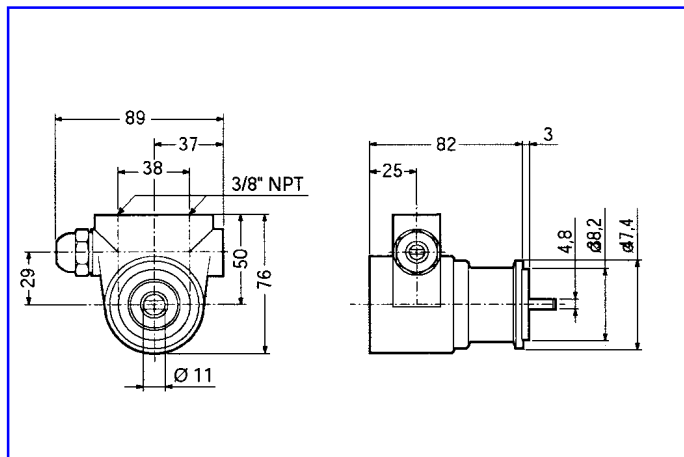
### Main applications

- fuel injection systems
- cooling systems
- reverse osmosis
- ultra-filtration
- feed-pump for hydrocarbon sample heading systems

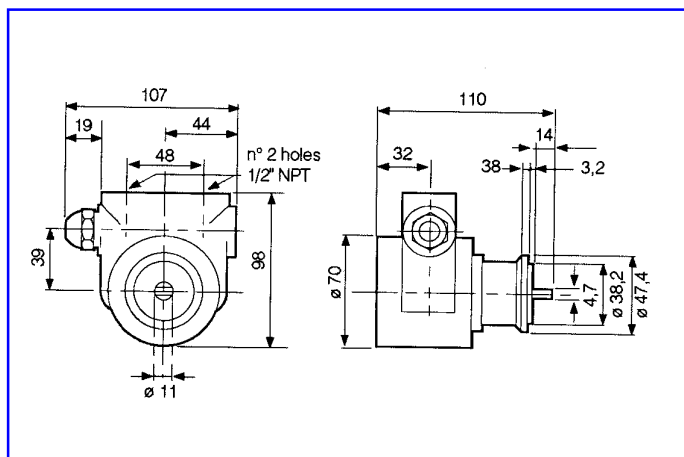
For hermetically sealed magnetic coupled units see



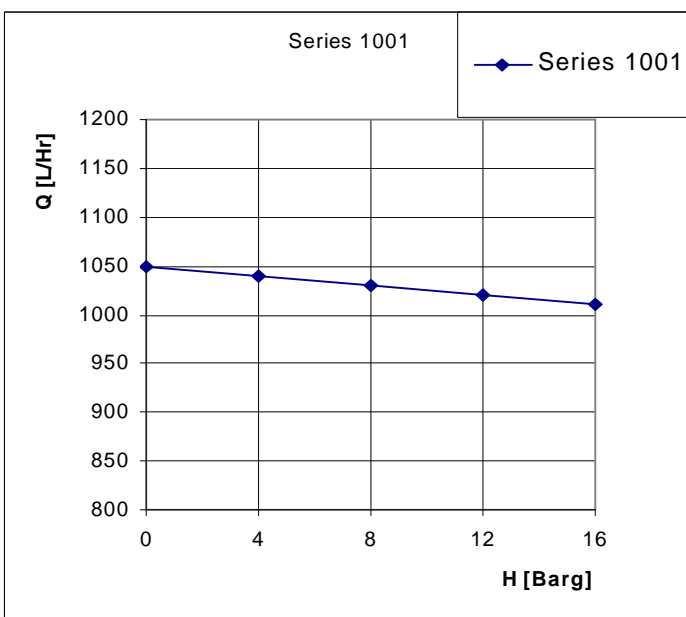
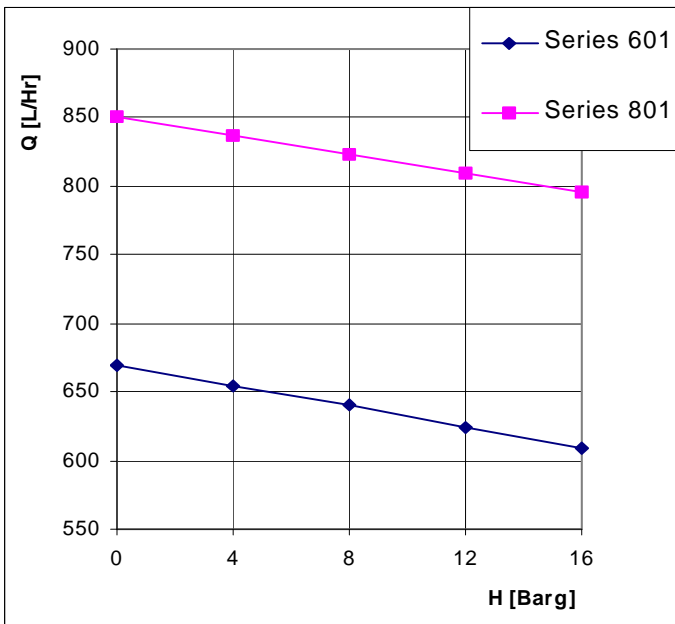
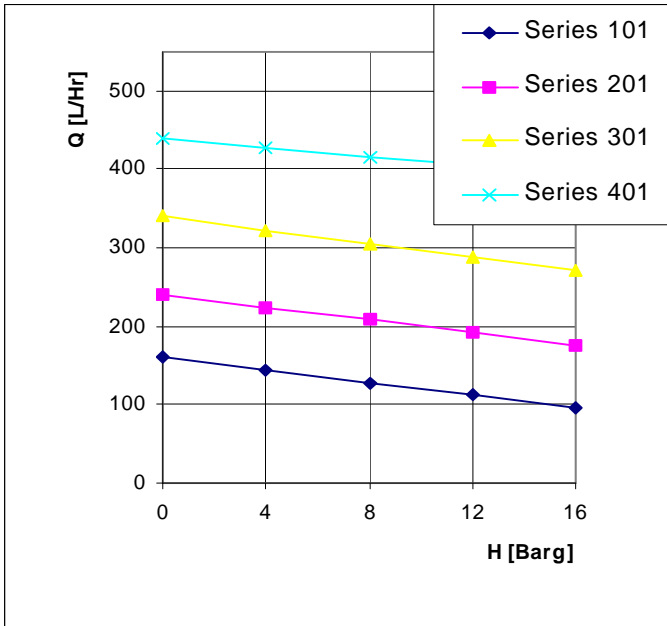
*Rotary vane pumps*



*Series 101 / 201 / 301 / 401*



*Series 601 / 801 / 1001*



## Specification

### System pressure

15 Barg max

### Discharge pressure

15 Barg max

### Operating temperature

60°C

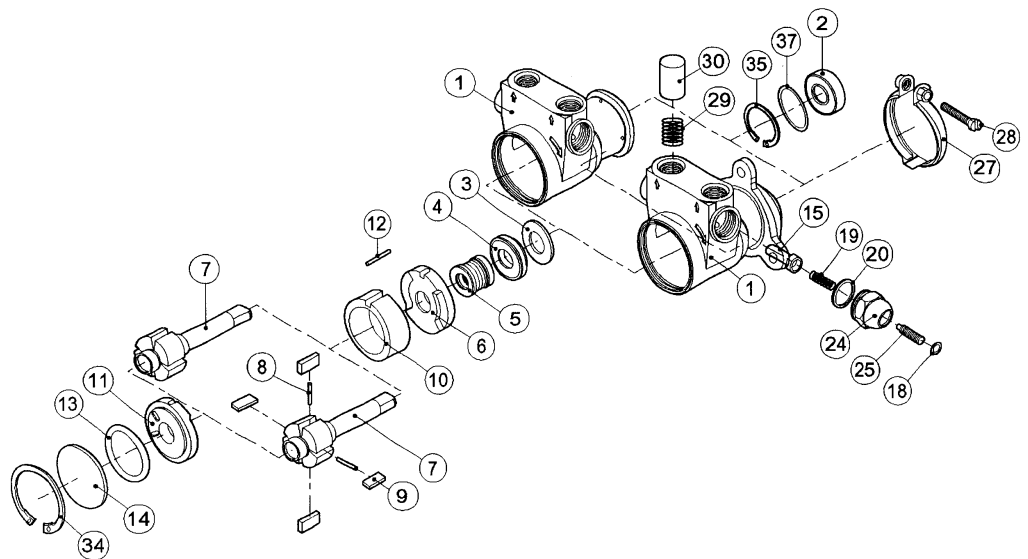
Consult works for critical applications.

Curve based on 50Hz drive motor (1450 RPM) with medium: water

## Exploded view

### Pos. Description

01	Housing / housing w/flange	15	Open or solid bypass valve
02	Ball bearing	18	O-ring bypass screw
03	Washer	19	Spring
04	Seal counterface	20	Washer
05	Seal	24	Normal bypass nut
06	Rear flange	25	Normal bypass screw
07	Rotor / rotor flange	27	Clamp
08	Pin	28	Clamp screw
09	Vane	29	Retainer spring
10	Liner	30	Cap
11	Front flange	34	Seeger circlip
12	Alignment pin	35	Seeger circlip
13	O-ring	37	Ball bearing seat o-ring
14	Cap		



*Interline Systems BV has adopted the policy of continous product development.  
Although this bulletin has been compiled with great care, current standard executions may deviate.*



# Interline

### Interline Systems BV

Ampèrestraat 3  
1704 SM Heerhugowaard  
tel. 00 31 (0) 72 576 08 40  
fax. 00 31 (0) 72 576 08 44

Internet: [www.interline.nl](http://www.interline.nl)  
E-mail: [info@interline.nl](mailto:info@interline.nl)