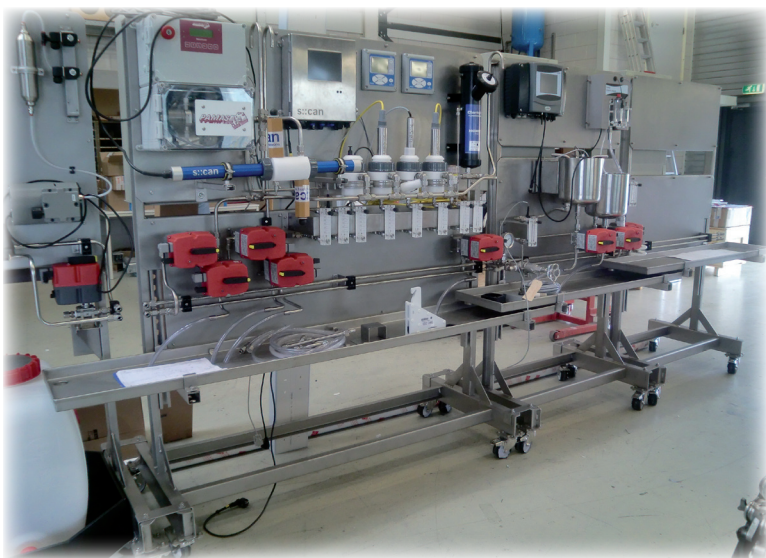


Water Quality Systems

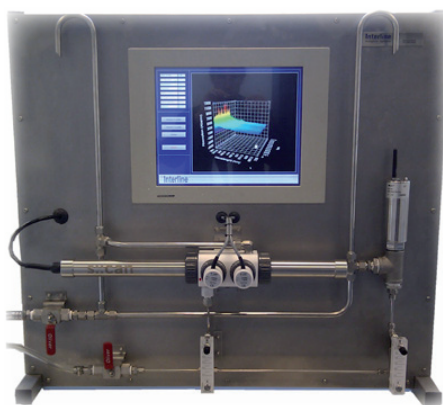
On-line analyser system integration
for water- and waste water industry



Early warning system for drinking water



Waste water quality analysis



Drinking water monitoring system

Interline Systems was founded in 1990 as a supplier of on-line analytical systems for the petrochemical- and natural gas industry.

As such we represent leading analyser manufacturers and produce analyser systems for oil refineries, gas production and gas treating plants, oil and gas storage facilities.

Several years ago it was found that there is a demand for analyser system integration specifically for the water and waste water industry. Up till then only single analytical instruments were used on limited applications. The laboratory was and, in many cases still, is leading.

Currently there is a demand for multi parameter analyser systems suitable for continuous operation and provided with remote access and other modern communication facilities.

Based on the experience in the oil & gas industry, Interline systems developed complete analytical systems for the potable water and waste water industry.

Typically following parameters are measured in:

Potable water applications:
BOD, TOC, Nitrate, Nitrite, Turbidity, BTX etc.

Waste water applications:
COD, Nitrate, Nitrite, DO, TSS, Ammonia, Orthophosphate etc.

Such analyser systems will be installed in cabinets suitable for the specific environment (lighting, heating, cooling, air conditioning) and provided with sample handling systems such as pumps, filters, flowmeters etc.

Digital communication will be provided based on the enduser-standard.



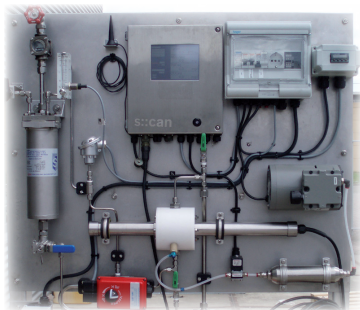
Waste water quality monitoring system



Sensor cleaning facility



Surface water samplers



Water quality monitoring system

Interline

Interline Systems BV

Ampèrestraat 3
1704 SM Heerhugowaard
The Netherlands
tel. 00 31 (0) 72 576 08 40
fax. 00 31 (0) 72 576 08 44

Internet: www.interline.nl
E-mail: info@interline.nl



De-icing analysis in surface water